

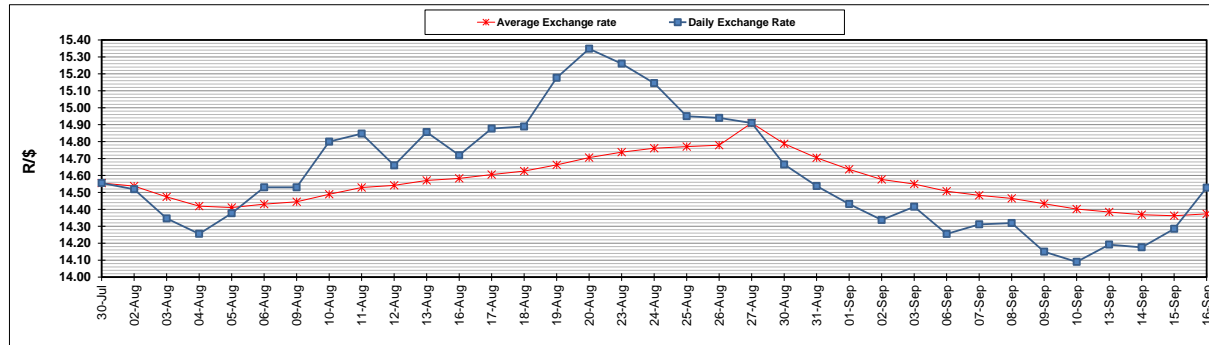
	PETROL 95 ULP	PETROL 93 ULP & LRP	DIESEL 0.05%	DIESEL 0.005%	ILL. PAR.
GAUTENG PUMP PRICE (SA c/l) AS FROM 01/09/2021	1,834.000	1,815.000	-	-	-
WHOLESALE PRICE (SA c/l) AS FROM 01/09/2021	-	-	1,548.980	1,552.380	948.488
SINGLE NATIONAL MAXIMUM RETAIL PRICE	-	-	-	-	1,197.000
BASIC FUEL PRICE - 16/09/2021 (SA c/l)	816.774	806.025	776.551	779.963	769.366
PRESS RELEASE CONTRIBUTION TO BFP 01/09/2021 - 16/09/2021 (SA c/l)	817.110	808.110	746.630	750.030	735.128
UNIT OVER/(UNDER) RECOVERY - 16/09/2021 (SA c/l)	0.336	2.085	(29.921)	(29.933)	(34.238)
AVERAGE BASIC FUEL PRICE 27/08/2021 - 16/09/2021	801.482	789.507	742.622	745.840	736.769
AVERAGE UNIT OVER/(UNDER) RECOVERY 27/08/2021 - 16/09/2021	17.724	20.699	8.808	8.790	1.359

### ANALYSIS MOVEMENT OF AVERAGE OVER/(UNDER) RECOVERY

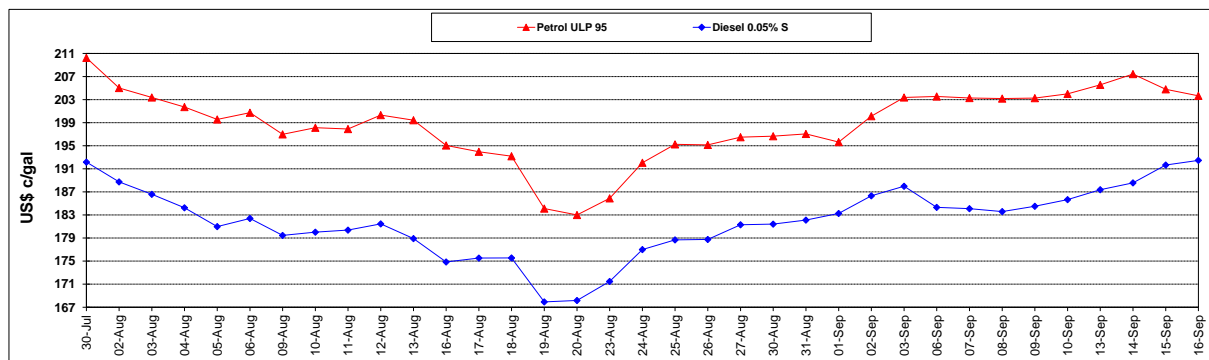
	PETROL 95	PETROL 93	DIESEL 0.05%	DIESEL 0.005%	ILL. PAR.
- MOVEMENT IN INTERNATIONAL PRODUCT PRICES	(4.887)	(1.574)	(12.142)	(12.251)	(19.426)
- MOVEMENT IN EXCHANGE RATE	22.611	22.273	20.950	21.041	20.785
AVERAGE UNIT OVER/(UNDER) RECOVERY 27/08/2021 - 16/09/2021	17.724	20.699	8.808	8.790	1.359

**R/\$ EXCHANGE RATE - (R/\$14.5283 - 16/09/2021)**

### EXCHANGE RATE USED IN BASIC FUEL PRICE



### INTERNATIONAL PRODUCT PRICES OF BASKET USED IN BASIC FUEL PRICE



### BASIC FUEL PRICE IN SA CENTS PER LITRE

